



# SPARE PARTS

**LX85**  
**Front End Loader**

# **SPARE PARTS MANUAL**

## **Summit LX85 Front End Loader**

**Summit Tractors LLC  
3379 Peachtree Road NE Suite 555  
Atlanta GA 30326**

Publication No.:  
Revision: 00, Released: DEC-21



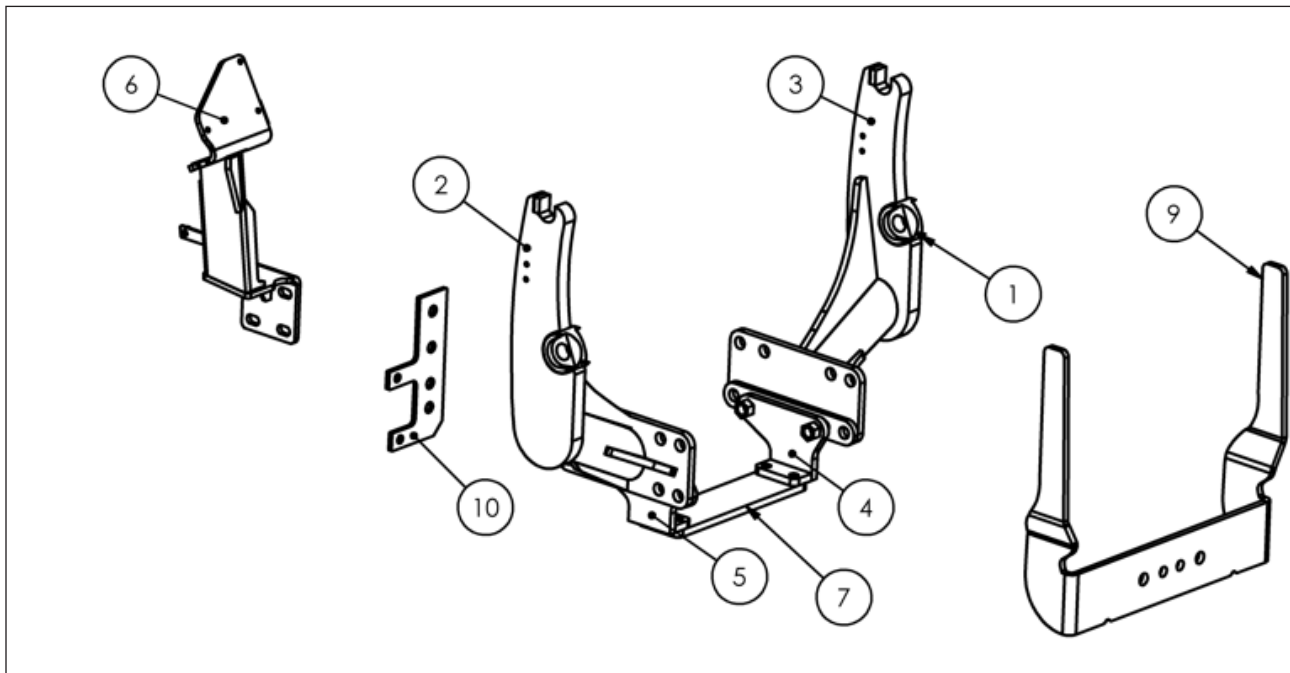


# CONTENTS

- 1. Subframe Hardware Detail..... 1
- 2. Hydraulic Fitting Instructions..... 3
- 3. Spare Part Detail..... 5

# SUBFRAME AND HYDRAULIC FITTING INSTRUCTION

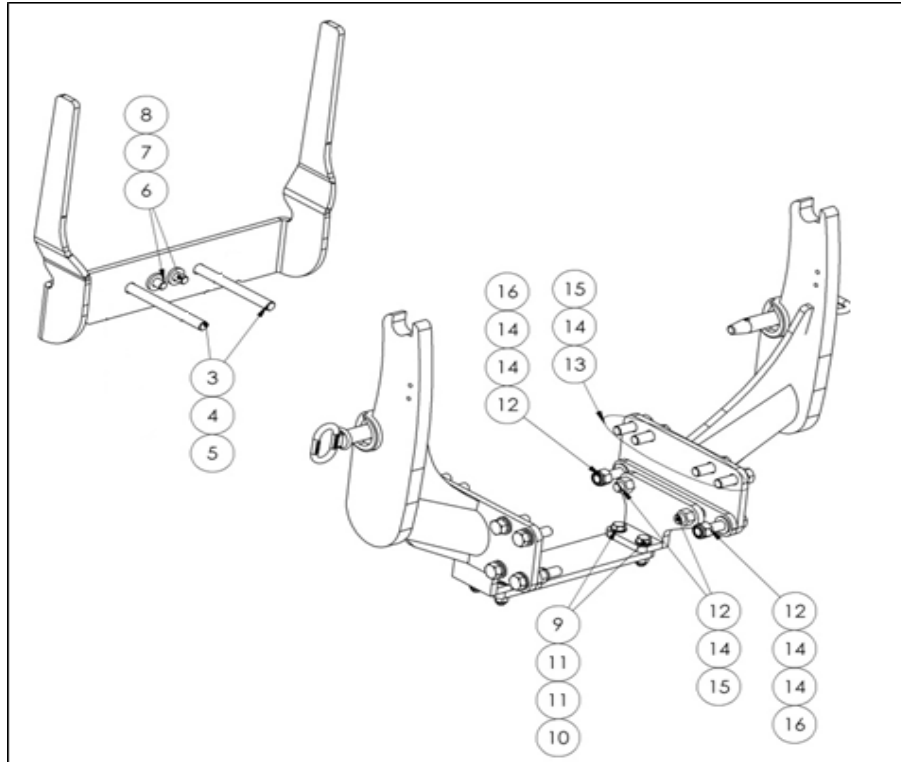
- Subframe and hardware parts details



ITEM NO.	PART NUMBER	DESCRIPTION	QTY.
1	S1130600474	GREASE NIPPLE	2
2	S1130602689	RH SUBFRAME (Harvest Green)	1
3	S1130602690	LH SUBFRAME (Harvest Green)	1
4	S1130602691	LH CROSS MEMBER MTG (Harvest Green)	1
5	S1130602692	RH CROSS MEMBER MTG (Harvest Green)	1
6	S1130602226	DCV MOUNTING BRACKET (Glossy Black)	1
7	S1130602687	CROSS MEMBER (Harvest Green)	1
8	S1130602688	MID MOVER PLT (Harvest Green)	2
9	S1130600540	RAMSHORN (Harvest Green)	1
10	S1130602228	PLATE FOR DCV PIPES MTG (Glossy Black)	1

# SUBFRAME AND HYDRAULIC FITTING INSTRUCTION

- Subframe and hardware parts details



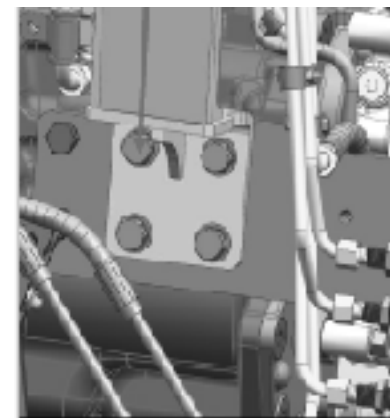
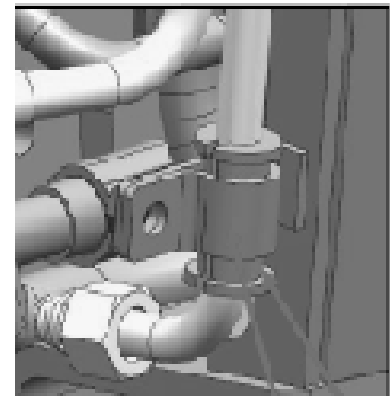
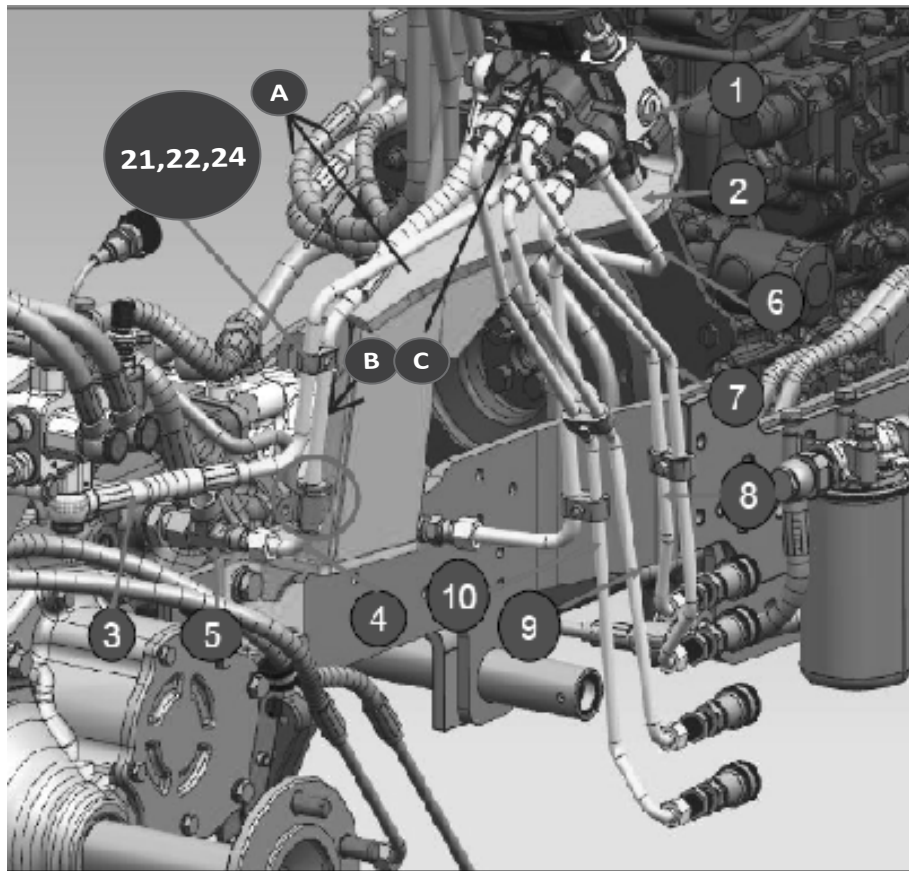
HORN PLATE CONNECTION			
S.NO	PART NO	DESCRIPTION	QTY
3	S1130602283	HEX,BOLT,M16X2X180 SEMI THREAD	2
4	S1130600547	PLAIN WASHER M16	2
5	S1130600548	SPRING WAHSER M16	2
6	S1130602284	HEX,BOLT,M14X2X40 SEMI THREAD	2
7	S1130600550	PLAIN WASHER M14	2
8	S1130600551	SPRING WAHSER M14	2
X-MEMBER CONNECTION			
S.NO	PART NO	DESCRIPTION	QTY
9	S1130602678	HEX,BOLT,M12X1.75X45 SEMI THREAD	4
10	S1130600563	NYLOC NUT M12	4
11	S1130600559	PLAIN WASHER M12	8
MAIN PLATE			
S.NO	PART NO	DESCRIPTION	QTY
12	S1130600735	HEX,BOLT,M16X2X75 SEMI THREAD,	8
13	S1130602693	HEX,BOLT,M16X2X50 SEMI THREAD	8
14	S1130600547	PLAIN WASHER M16	20
15	S1130600548	SPRING WAHSER M16	12
16	S1130600733	NYLOC NUT M16X2	4

# HYDRAULIC FITTING INSTRUCTION

- Subframe and hardware parts details

S.NO.	PART NUMBER	DESCRIPTION	QTY.
1	S1130603272	Loder DCV with Float Option	1
2	S1130602226	DCV MOUNTING BRACKET (Glossy Black)	1
3	S1130602225	PIPE FROM 2DA DCV(HPCO) TO 1DA DCV (P)	1
4	S1130602227	FLEXIBLE PIPE FROM LOADER DCV(T) TO REAR	1
5	S1130602231	TEE ADOPTER- M18x1.5, M18x1.5, M24x1.5	1
6	S1130602230	SECONDARY PIPE PRIORITY VALVE TO 2DA DCV	1
7	S1130602233	PIPE FROM 2DA DCV (B1) TO QRC 2	1
8	S1130602236	PIPE FROM 2DA DCV (A1) TO QRC 1	1
9	S1130602234	PIPE FROM 2DA DCV (A2) TO QRC 3	1
10	S1130602235	PIPE FROM 2DA DCV (B2) TO QRC 4	1
11	S1130602249	HEX BOLT M14X2X50 SA4GS	4
12	S1130602258	SPRING WASHER B-14	4
13	S1130600550	PLAIN WASHER M14	4
14	S1130602257	HEX SCREW M8X1.25X35 8.8 SA4GS	3
15	S1130600687	SPRING WASHER M8	3
16	S1130602252	BANJO BOLT Ø16.4(19TPI)	3
17	S1130602238	ADOPTER M18X1.5-3/8" BSP	4
18	S1130602253	BONDED SEAL FOR3/8" BSP	10
19	S1130602686	PRIMARY PIPE FROM PRIORITY VALVE TO 2DA DCV	1
20	S1130602243	FEMALE QUICK CONNECT COUPLER3/8" BSP	4
21	S1130602255	HEX SCREW M6X30 SA4GS	4
22	S1130602224	HEX NUT M6 -8 SA4GS	4
23	S1130602241	CLAMP-10/10	3
24	S1130602240	CLAMP-12/12	1
25	S1130602228	PLATE FOR DCV PIPES MTG (Glossy Black)	1
26	S1130602222	JOY STICK LEVER	1
26A	S1130602684	(Male M10x1.5 VS MALE M12 X 1.75) Bucher valve to Joystick lever adaptor for push button joystick only	1
27	S1130602229	JOY STICK BELLOW	1
28	S1130600524	HST IVT PUSH BUTTON KNOB	1
29	S1130602251	HEX SCREW M12*1.75*35	2
30	S1130602260	HEX NUT M12X1.75 -8 SA4GS	2
31	S1130602259	SPRING WASHER B-12 TYPE-A IS:3063-1972	2
32	S1130602244	M/C WASHER DIA 13*DIA 24*2.5	2
33	S1130602245	VIBRATION DAMPER	1
34	S1130602237	CLAMP CURVE	1
35	S1130602683	CUP HOLDER_RH-HST	1
36	S1130602225	SECONDARY PIPE FROM PRIORITY VALVE TO 1DA-DCV (P)	1

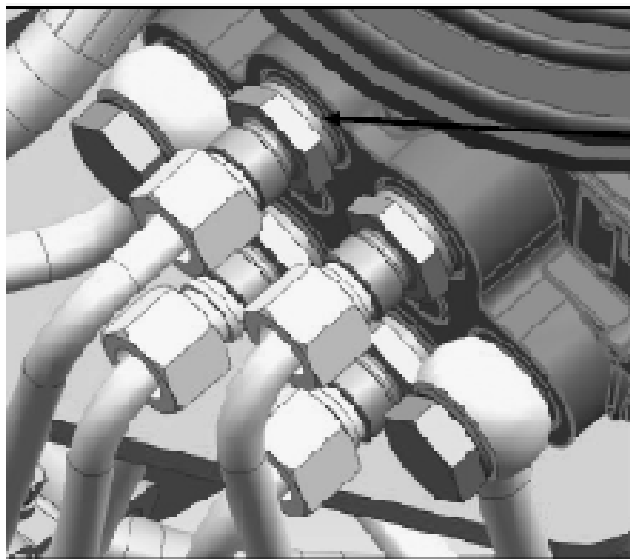
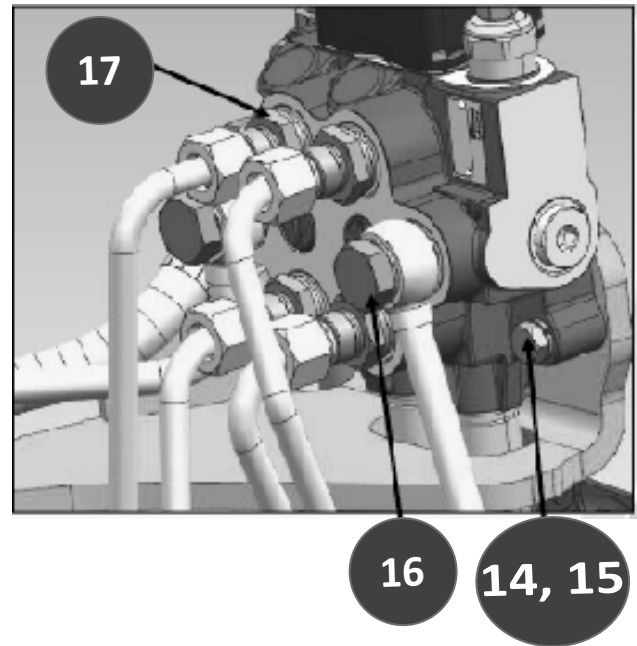
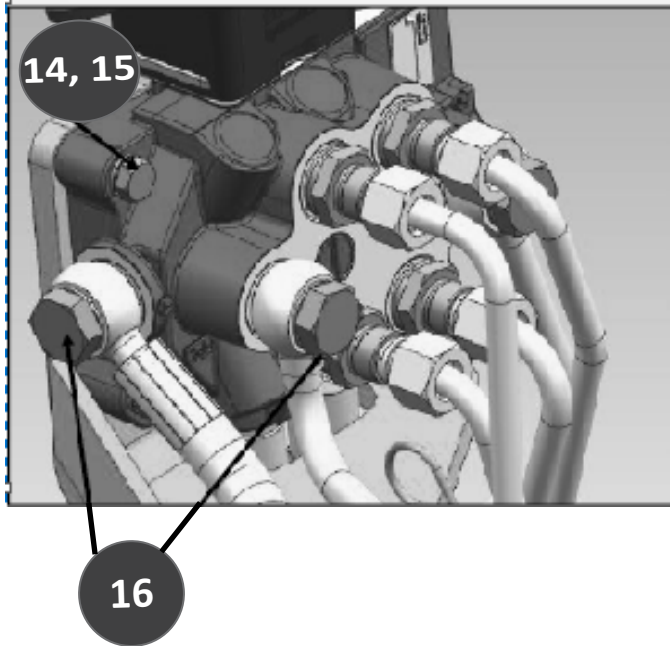
## HYDRAULIC FITTING INSTRUCTION



1. Kindly dismantle RH tire & cup holder on the fender for the following assembly.
2. Use necessary precautions and safety.
3. Preassemble the bracket A(no. 1), B(hose 4), C & valve(no. 1), (no. 14,15)
4. Do not torque "B(hose 4) connection on the valve complete full assembly and then tighten the banjo bolt.



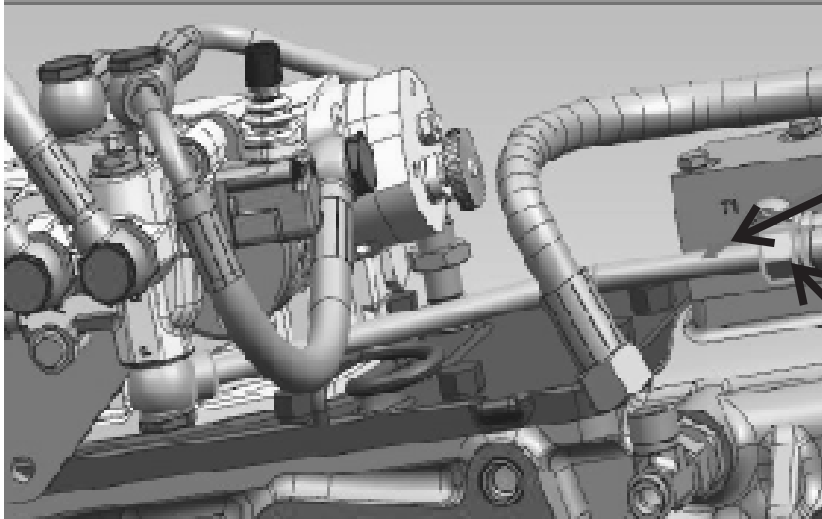
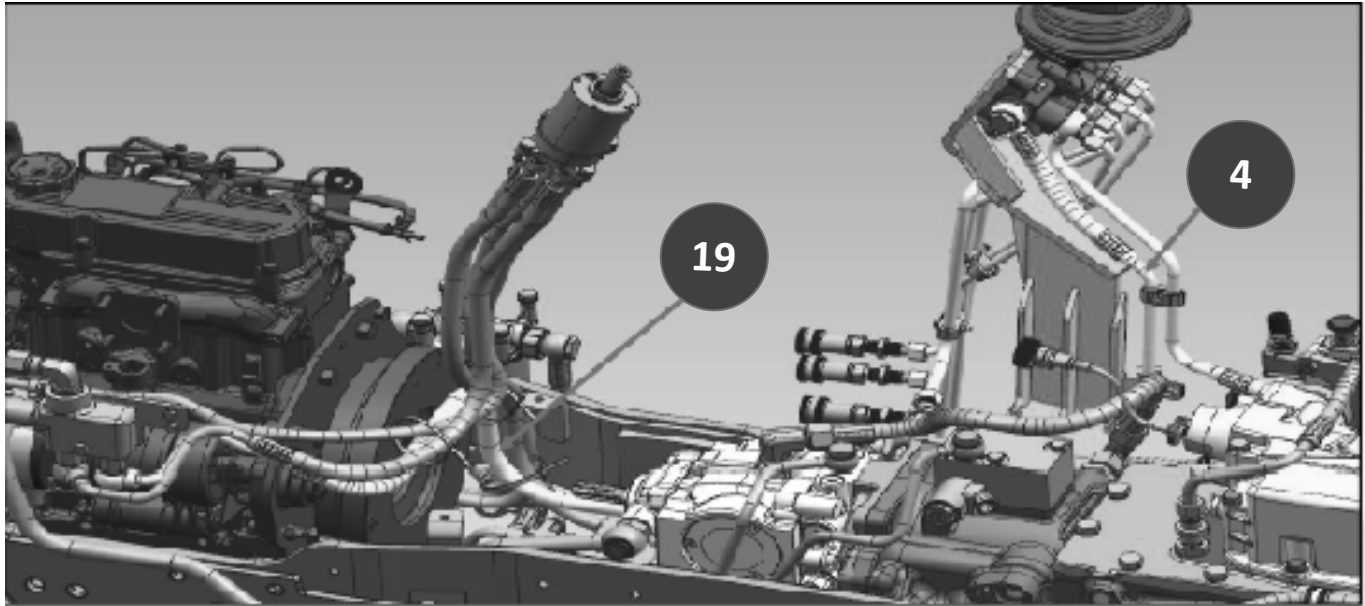
## HYDRAULIC FITTING INSTRUCTION



18

5. Assembly no. 17 to the valve all 4 nos.
6. Followed by 25,29,30,31,32
7. Assemble 8-9-7-10 in series use thread lock.

## HYDRAULIC FITTING INSTRUCTION



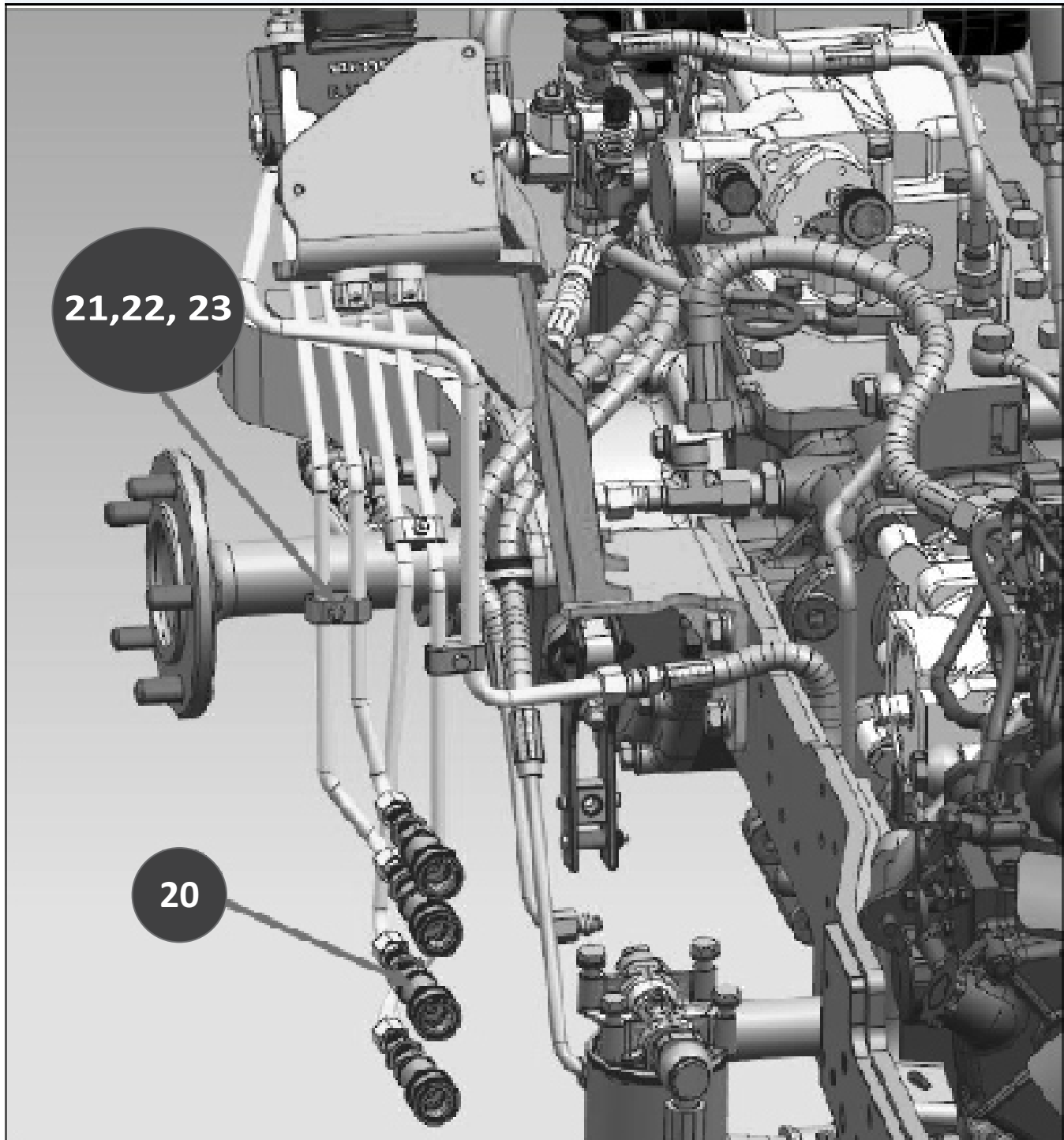
This pipe should be removed in loader case.

Connect here hose no. 6 with hose no. 19.

8. Next step is to assembly no. 6,4,3,5. followed by 21,22,24.

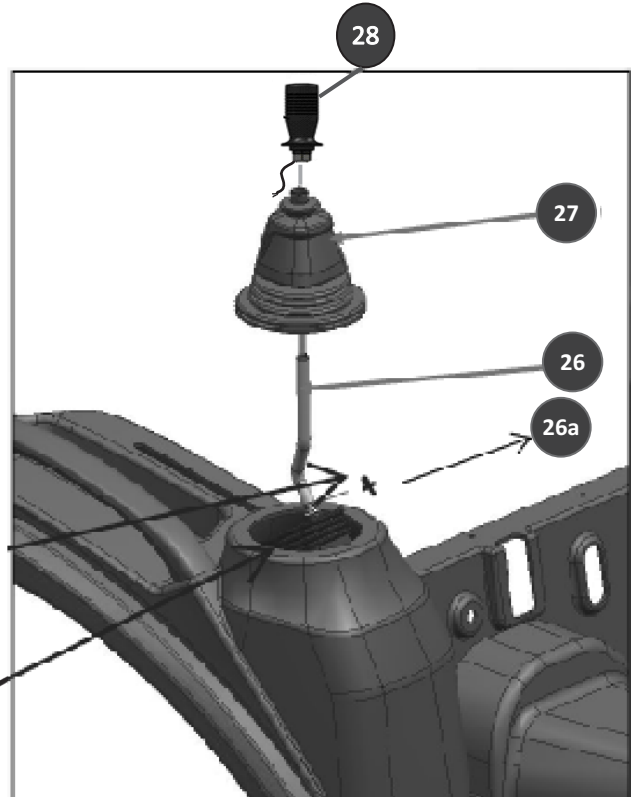
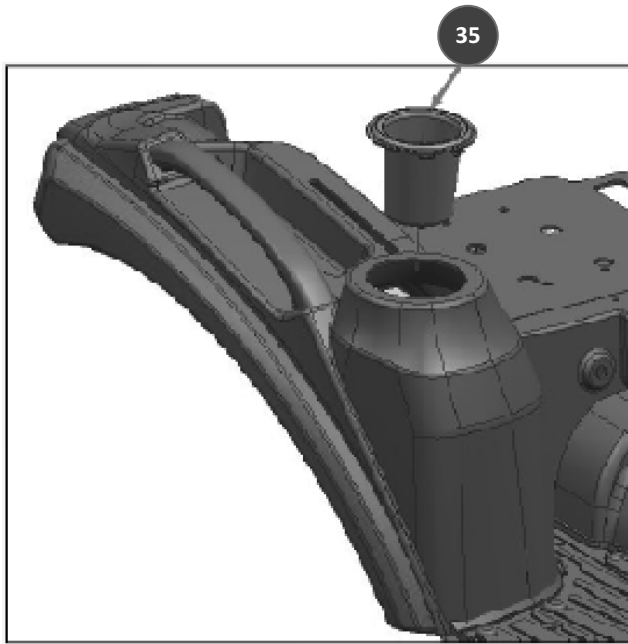
8A. Hose no. 19 is a part of tractor( For part code, refer tractor manual). Connect no. 6 with this hose at centre joint.

## HYDRAULIC FITTING INSTRUCTION

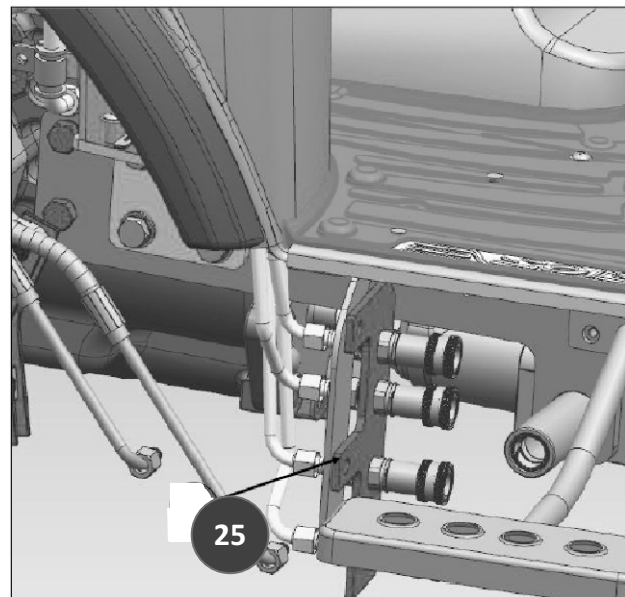


9. Assemble No. 20 , 21,22,23 respectively,  
The orientation is very important so there is no issues with tire fouling.

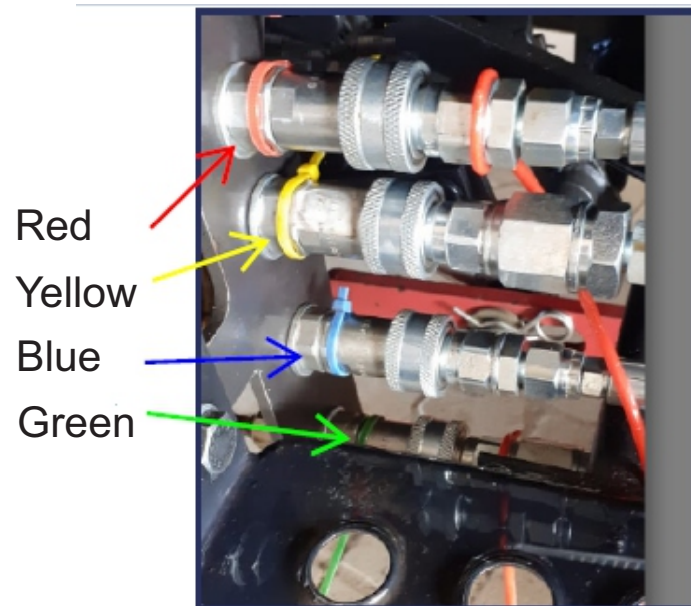
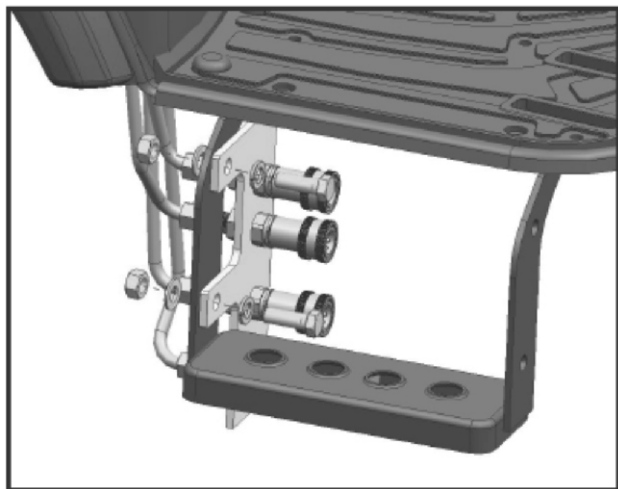
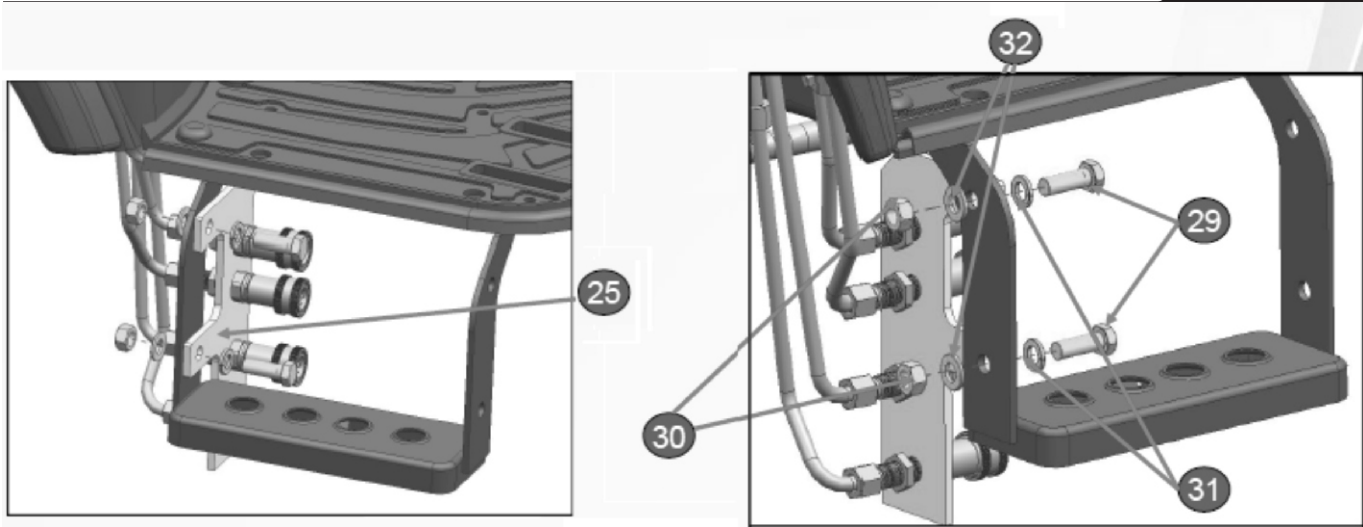
## HYDRAULIC FITTING INSTRUCTION



10. Assemble the joystick with a adapter 26a- 01- 1211.
11. Use the nut to lock the joystick lever in position.
12. Push the boot into the lever and mate it with the cup holder spout lining.
13. Assemble the knob no. 28.

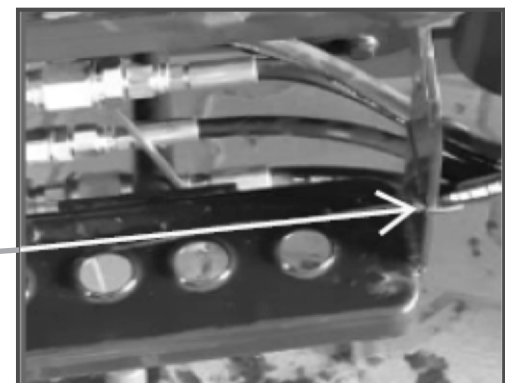


## HYDRAULIC FITTING INSTRUCTION



14. After the QRC assembly kindly assembly the cables ties, as shown above.

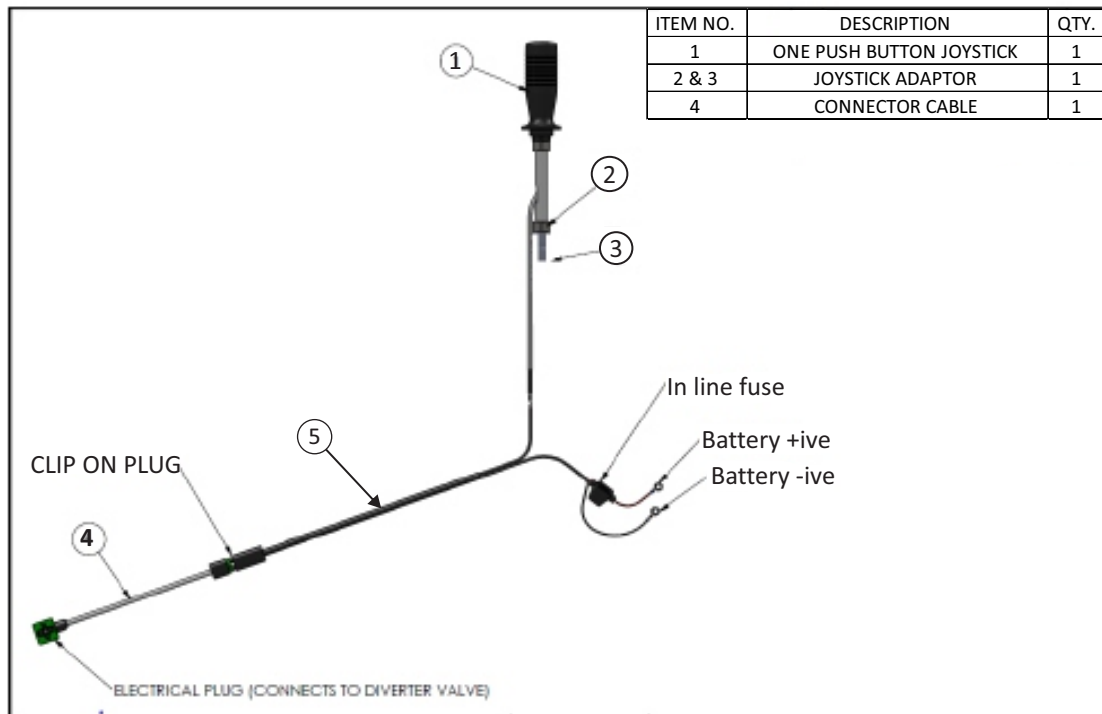
15. Use a cable tie to hold the hose in this area.



Refer user manual for torque chart

# HYDRAULIC FITTING INSTRUCTION

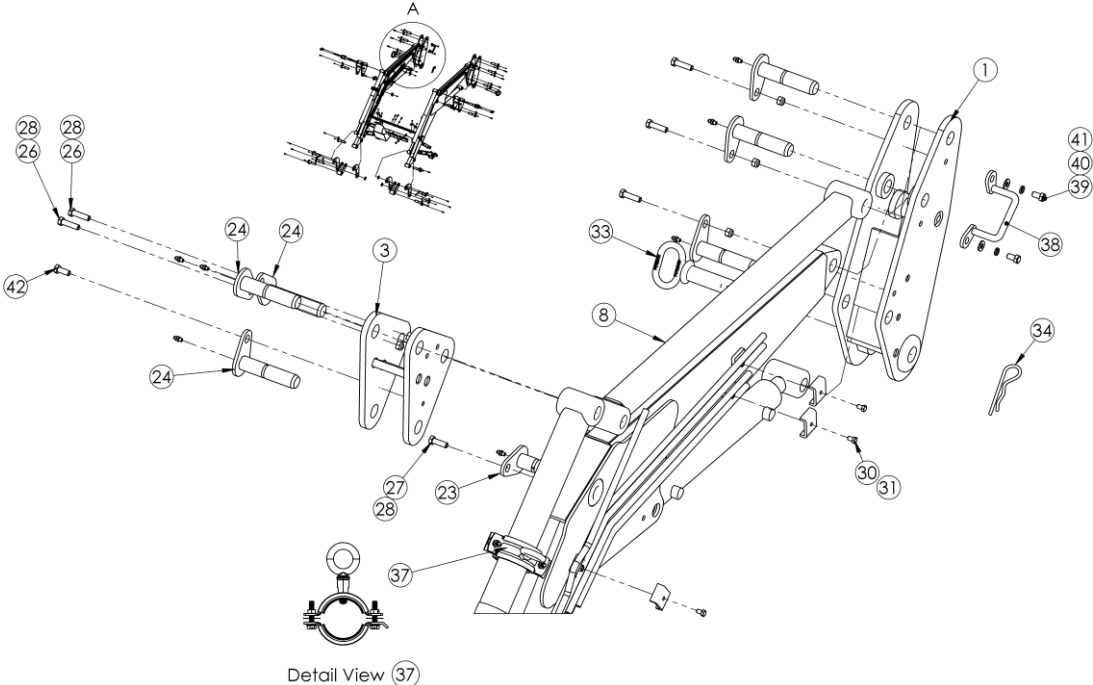
ITEM NO	PART NO.	DESCRIPTION	QTY
5	S1130602959	WIRE HARNESS CONNECTION TO BATTERY	1



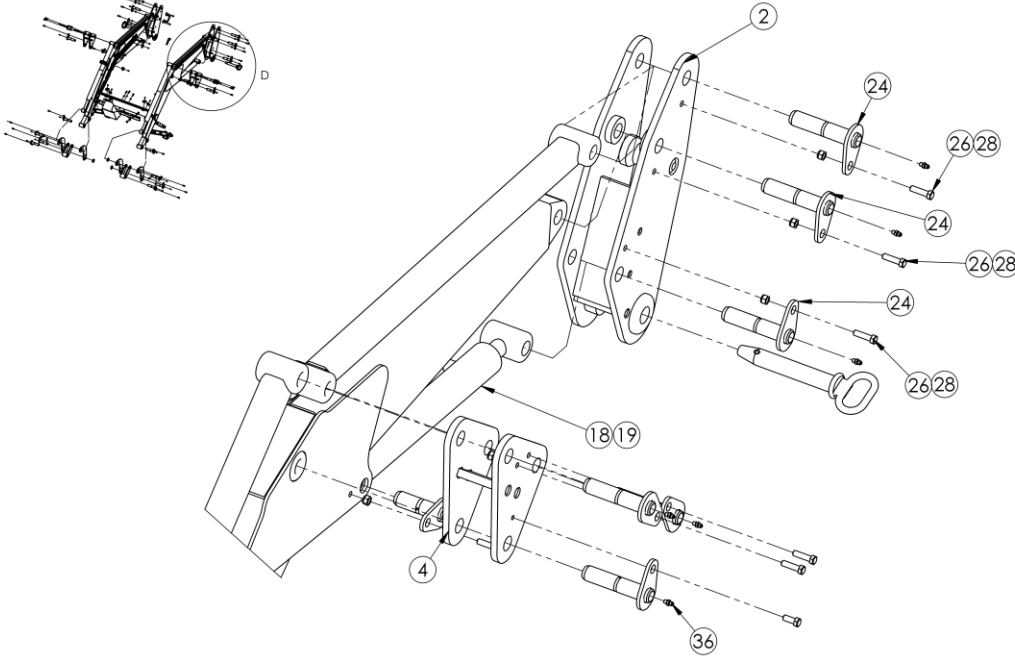
# SPARE PARTS ORDER DETAILS

- FEL ASSEMBLY PART DETAILS**

LOADER REAR RH



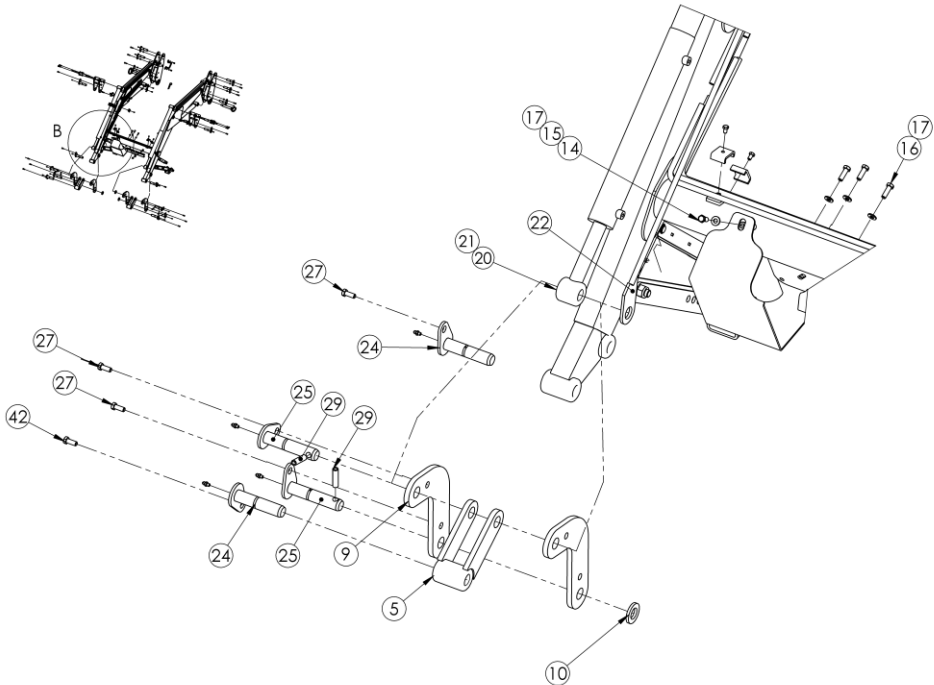
LOADER REAR LH



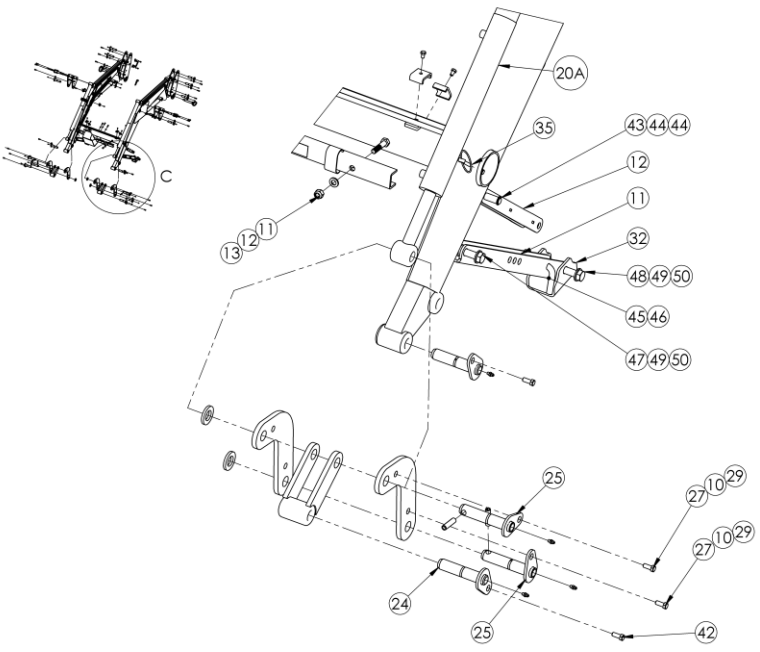
# SPARE PARTS ORDER DETAILS

- FEL ASSEMBLY PART DETAILS**

LOADER FRONT RH



LOADER FRONT LH





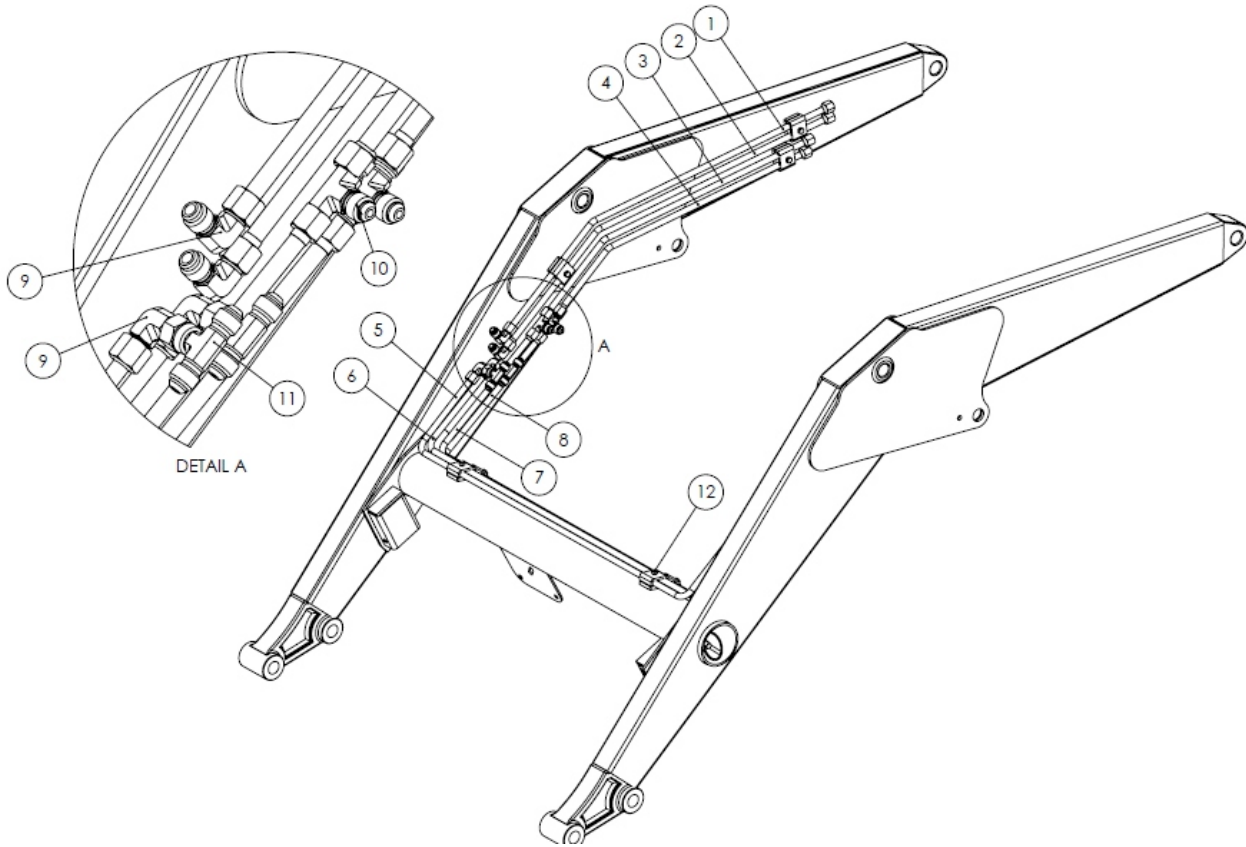
# SPARE PARTS ORDER DETAILS

## ● FEL ASSEMBLY PART DETAILS

ITEM NO.	PART NUMBER	PART DESCRIPTION	QTY.
1	S1130600613	RH POST CAP	1
2	S1130600614	LH POST CAP	1
3	S1130600615	RH MIDDLE ROCKER	1
4	S1130600616	LH MIDDLE ROCKER	1
5	S1130600446	FRONT LINK ASSEMBLY	2
6	S1130604314	LEG STAND ASSEMBLY LH & RH	2
7	S1130604315	LEG CONNECTING ASSEMBLY LH & RH	2
8	S1130600619	RH & LH SL LINK ASSEMBLY 3200	2
9	S1130600449	FRONT ROCKER/SIDE PLATE	4
10	S1130600450	SPACER 391	3
11	S1130600451	PROP ASSEMBLY	1
12	S1130600452	NYLOC NUT M10×1.5	1
13	S1130600453	PLAIN WASHER M10	1
14	S1130600621	MANIFOLD COVER	1
15	S1130600464	HEX. BOLT M8×1.25×20 SEMI THREAD	1
16	S1130602674	HEX. FLANGE SHOULDER BOLT M8×1.25×30 SEMI THREAD	3
17	S1130600466	PLAIN WASHER M8	4
18	S1130604604	LIFT CYLINDER LH & RH (BLACK)	2
19	S1130601263	LIFT CYLINDER SEAL KIT	2
20	S1130600063	HYD.CYLINDER TILT RH 3200 (Indicator Plate Weld type)	1
20A	S1130604603	TILT CYLINDER (Black)	2
21	S1130601263	TILT CYLINDER SEAL KIT	2
22	S1130600457	LEVEL INDICATOR ASSEMBLY	1
23	S1130600461	GREASABALE PIN ASSEMBLY 287	2
24	S1130600459	GREASABALE PIN ASSEMBLY 284	16
25	S1130600460	GREASABALE PIN ASSEMBLY 297	4
26	S1130602674	HEX. FLANGE SHOULDER BOLT M8×1.25×30 SEMI THREAD	12
27	S1130602676	HEX. FLANGE SHOULDER BOLT M8×1.25×20 SEMI THREAD	6
28	S1130600554	NYLOC NUT M8×1.25	12
29	S1130600006	SPRING DOWEL	4
30	S1130600468	CLAMP COVER	7
31	S1130600469	HEX. BOLT M6×1×10 SEMI THREAD	7
32	S1130604316	LEG END PLATE	2
33	S1130600471	FORGED PIN	2
34	S1130600472	PIN	2
35	S1130600473	LYNCH PIN	2
36	S1130600474	GREASE NIPPLE GN14	22
37	S1130602945	LEVEL INDICATOR CLAMP ASSEMBLY	1
38	S1130602946	HOSE HOLDER BRACKET	1
39	S1130602947	HEX. BOLT M8×1.25×15 SEMI THREAD	2
40	S1130600466	PLAIN WASHER M8	2
41	S1130600687	SPRING WASHER M8	2
42	S1130602676	HEX. FLANGE SHOULDER BOLT M8×1.25×15 SEMI THREAD	4
43	S1130604317	LEG CONNECTING PIN	2
44	S1130604318	CIRCLIP-471014	4
45	S1130604319	LEG CONNECTING ROD	2
46	S1130600473	LYNCH PIN	2
47	S1130604320	HEX. BOLT M14×2×75 SEMI THREAD	2
48	S1130604321	HEX. BOLT M14×2×90 SEMI THREAD	2
49	S1130604322	M14 PLAIN WASHER	2
50	S1130604323	M14 NYLOC NUT	2

# SPARE PARTS ORDER DETAILS

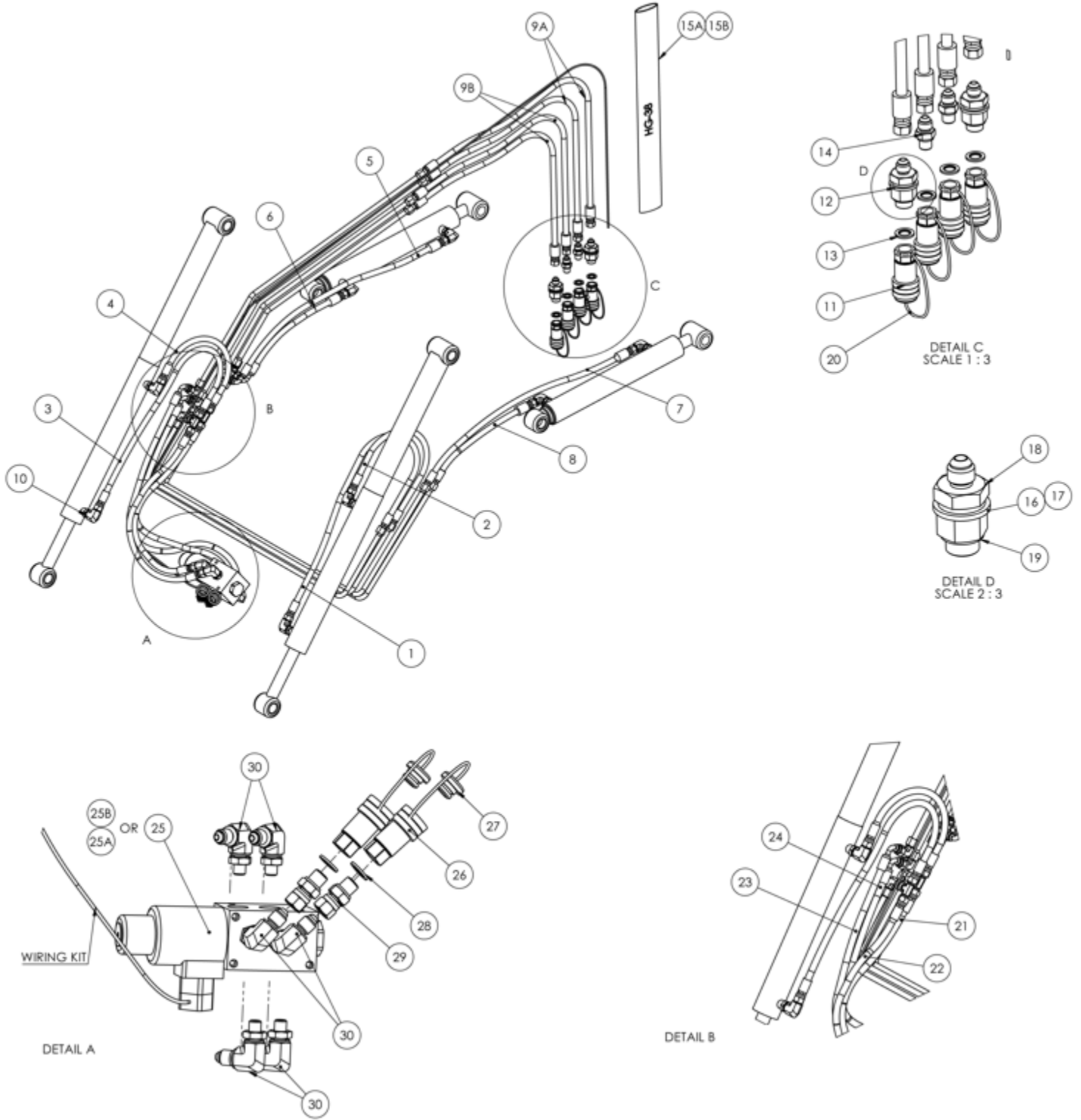
## ● FEL HYDRAULIC PIPE FITTINGS AND CLAMPS PART DETAILS



ITEM NO.	PART NUMBER	PART DESCRIPTION	STANDARD	3RD FUNCTION
			QTY.	QTY.
1	S1130600496	CROWD PIPE 131	1	0
1	S1130600623	CROWD PIPE 146	0	1
2	S1130600497	DUMP PIPE 132	1	0
2	S1130600626	DUMP PIPE 147	0	1
3	S1130600498	LOWER PIPE 133	1	1
4	S1130600499	RAISE PIPE 134	1	1
5	S1130600500	CROWD PIPE 127	1	1
6	S1130600501	DUMP PIPE 128	1	1
7	S1130600502	LOWER PIPE 129	1	1
8	S1130600503	RAISE PIPE 130	1	1
9	S1130600008	0909 JICM JICM ELBOW	0	4
10	S1130600487	9/16" JICM 9/16" JICM 9/16" JICM TEE	4	2
11	S1130602948	090909 JICM JICM JIC FEMALE TEE	0	2
12	S1130600468	CLAMP COVER	11	11

# SPARE PARTS ORDER DETAILS

## ● FEL HYDRAULIC HOSE AND ADAPTORS PART DETAILS



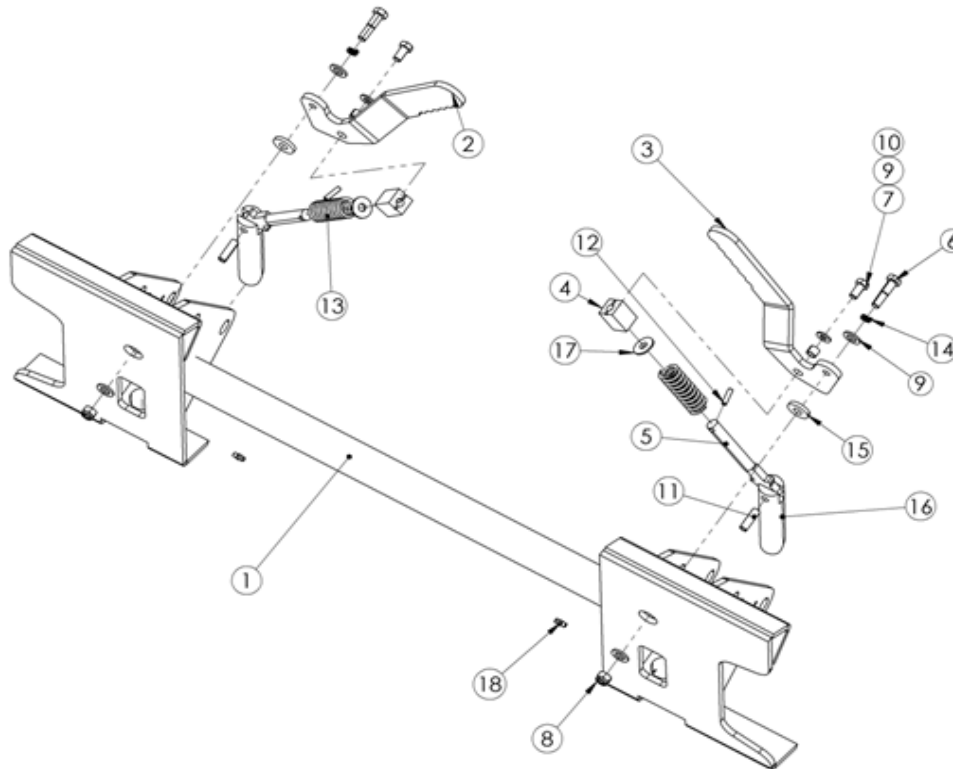
# SPARE PARTS ORDER DETAILS

## ● FEL HYDRAULIC HOSE AND ADAPTORS PART DETAILS

ITEM NO.	PART NUMBER	PART DESCRIPTION	STANDARD	3RD FUNCTION
			QTY.	QTY.
1	S1130600475	HOSE H225-700MM CUT LENGTH	1	1
2	S1130600476	HOSE H226-400MM CUT LENGTH	1	1
3	S1130600477	HOSE H227-700MM CUT LENGTH	1	1
3	S1130602949	HOSE T227-700MM CUT LENGTH	0	1
4	S1130600478	HOSE H228-400MM CUT LENGTH	1	1
4	S1130602950	HOSE T228-400MM CUT LENGTH	0	1
5	S1130600479	HOSE H229-620MM CUT LENGTH	1	1
6	S1130600480	HOSE H230-300MM CUT LENGTH	1	1
7	S1130600481	HOSE H231-620MM CUT LENGTH	1	1
8	S1130600482	HOSE H232-300MM CUT LENGTH	1	1
9a	S1130602695	HOSE H233A-1150MM CUT LENGTH	2	2
9b	S1130602696	HOSE H233B-1200MM CUT LENGTH	2	2
10	S1130600484	9/16" JIC M 1/4" BSPPOM NW 90° ELBOW	8	8
11	S1130600489	3/8" BSPPF FEMALE QRC /POPPET	4	4
12	S1130600113	ORIFICE ADAPTOR ASSY	2	2
13	S1130600492	06 DOWTY SEAL	4	4
14	S1130600485	3/8" BSPPOM 9/16"JICM NIPPLE	4	4
15a	S1130602697	WOVEN NYLON HOSE GUARD -1150mm Lg	2	2
15b	S1130602698	WOVEN NYLON HOSE GUARD -1200mm Lg	2	2
16	S1130600493	08 DOWTY SEAL	2	2
17	S1130600494	ORIFICE PLATE 1.2MM HOLE DRILL	2	2
18	S1130600486	1/2" MALE BSPP 9/16" MALE JIC	2	2
19	S1130600488	3/8" MALE BSPP 1/2" FEMALE BSPP	2	2
20	S1130600490	RUBBER DUST PLUG	4	4
21	S1130602951	HOSE T234-370MM CUT LENGTH	0	1
22	S1130602952	HOSE T235-390MM CUT LENGTH	0	1
23	S1130602953	HOSE T236-655MM CUT LENGTH	0	1
24	S1130602954	HOSE T237-580MM CUT LENGTH	0	2
25	S1130600646	DIVERTER VALVE - DFE 80	0	2
25A	S1130602960	DIVERTER VALVE - Hydro kit	0	1
25B	S1130602961	0409 BSPPOM JICM NIPPLE	0	3
26	S1130600489	3/8" BSPPF FEMALE QRC/POPPET	0	2
27	S1130600490	RUBBER DUST PLUG	0	2
28	S1130600492	06 DOWTY SEAL	0	2
29	S1130600647	3/8"BSPPOM & 9/16 " JIC FEMALE ADAPTER	0	2
30	S1130600010	3/8" BSPPOM 9/16"JICM 90° ELBOW	0	6

# SPARE PARTS ORDER DETAILS

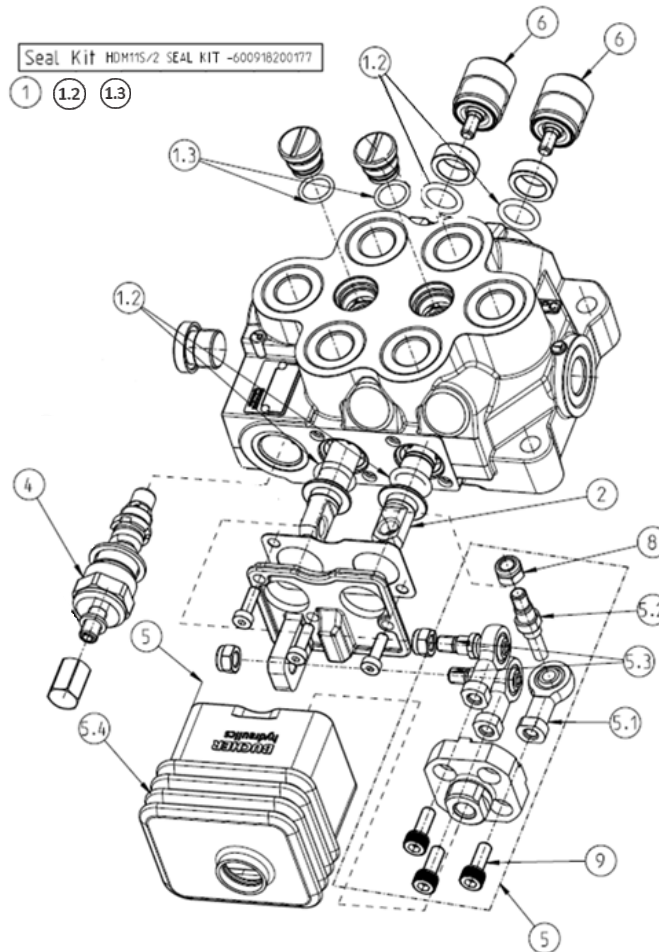
- Skid Steer Hitch Details



ITEM NO.	PART NO.	DESCRIPTION	QTY
1	S1130600504	SKID STEER	1
2	S1130600505	HANDLE RH	1
3	S1130600506	HANDLE LH	1
4	S1130600507	PIVOT BLOCK	2
5	S1130600508	CONNECTIG ROD	2
6	S1130600509	HEX. BOLT M10×1.5×45	2
7	S1130600510	HEX. BOLT M10×1.5×20	2
8	S1130600452	NYLOC NUT M10×1.5	2
9	S1130600453	PLAIN WASHER M10	6
10	S1130600513	PIPE WASHER H11	2
11	S1130600514	DOWEL Ø10×32	2
12	S1130600515	DOWEL Ø6×25	2
13	S1130600516	SPRING	2
14	S1130600517	DOUBLE HELICAL WASHER M12	2
15	S1130600518	FRICTION PAD	2
16	S1130600519	WEDGE PIN	2
17	S1130600520	CUP WASHER	2
18	S1130600474	GREASE NIPPLE GN14	2

# SPARE PARTS ORDER DETAILS

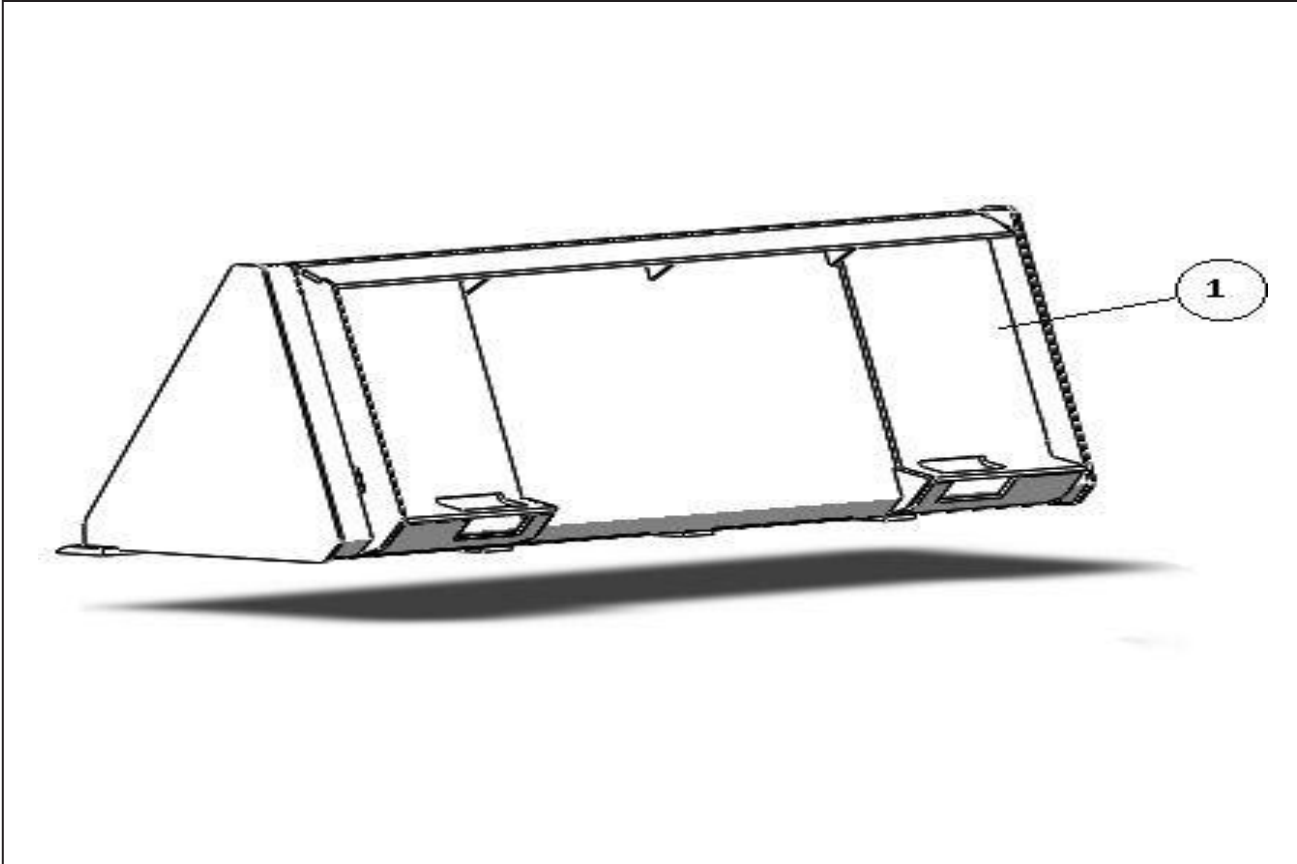
## ● Valve Internal Parts Details



Item No	Part No.	Description	Ref no.	Qty.
1	S1130603891	Seal Kit HD11S/2	600918200117	1
2	S1130600887	"A" Spool HDM11	600111300277	1
4	S1130600888	VM01 95-210 Bar Relief valve	600114100033	1
5	S1130600890	L247 HDM11S Joystick Assy	600113100645	1
5.1	S1130602682	SPHERICAL BEARING M6	900915300051	1
5.2	S1130602681	FULCRUM PIN 2nd SPOOL	600111300270	1
5.3	S1130601308	FULCRUM PIN + BEARING	600113200116	2
5.4	S1130600443	Rubber Boot	200674600110	1
6	S1130600889	POSITIONER "01"	600114200043	1
8	S1130603314	HEX NUT M7X1	600905300139	3
9	S1130603890	ALLEN BOLT M6X16	600904300055	3

# SPARE PARTS ORDER DETAILS

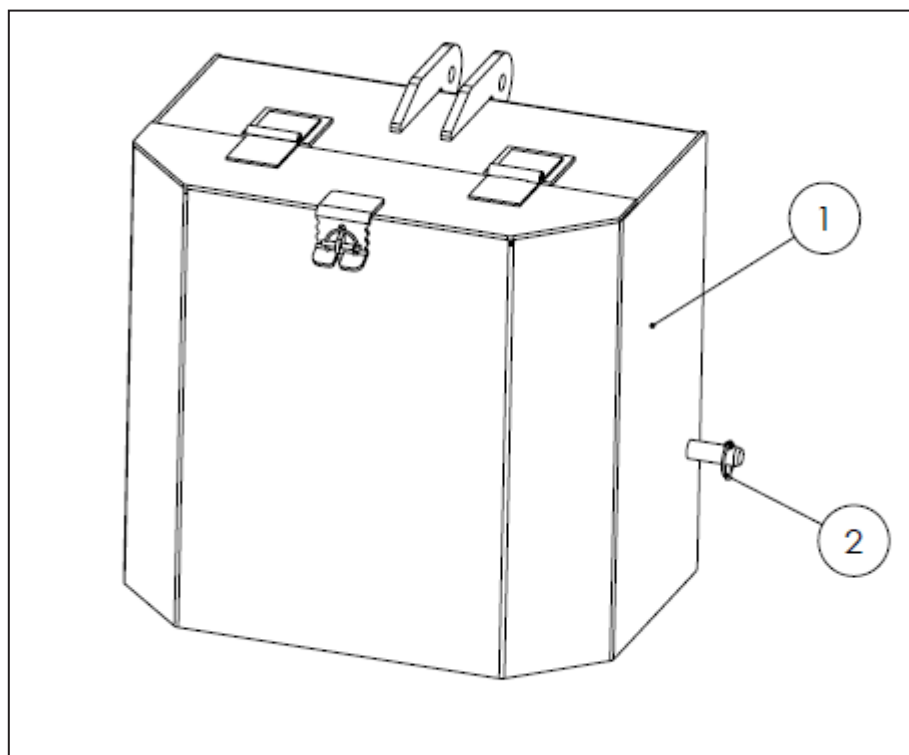
- 50" Skid Steer Standard Bucket



SKID STEER STANDARD BUCKET			
ITEM NO.	PART NO.	PART DESCRIPTION	QTY.
1	S1130600896	50" SKID STEER STANDARD BUCKET	1

## SPARE PARTS ORDER DETAILS

- Counter Weight Box, Cat I 300 Kg.

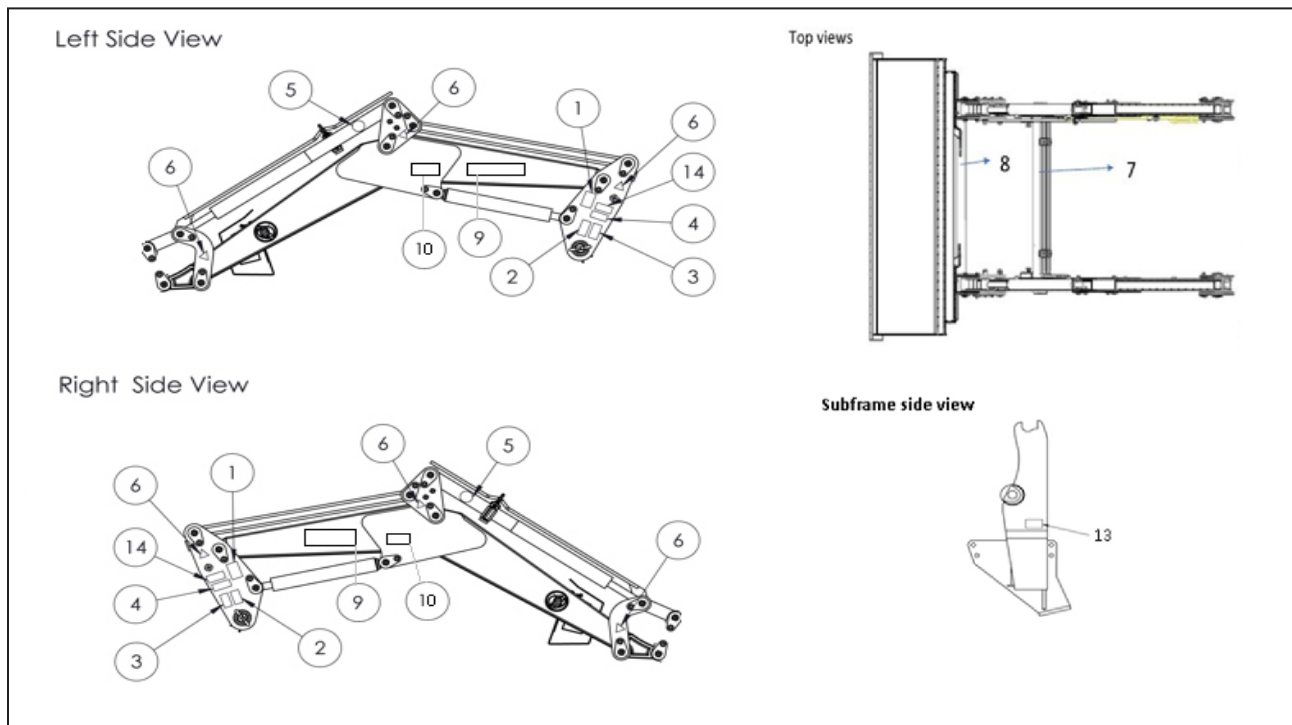


COUNTERWEIGHT BOX 300 KGS.			
ITEM NO.	PART NUMBER	PART DESCRIPTION	QTY.
1	S1130601325	300 KG COUNTERWEIGHT	1
2	S1130601306	LYNCH PIN LP 06	2



# SPARE PARTS ORDER DETAILS

## ● Loader Decals



Refer to decals details available on Page 12,13 & 14.

ITEM NO.	PART NO.	DESCRIPTION	QTY
1	S1130600575	CRUSHING HAZARD LABEL STICKER	1
2	S1130600576	CARRY PASSENGER LABEL STICKER	1
3	S1130600577	READ THE OPERATOR MANUAL LABEL STICKER	1
4	S1130600578	STAY CLEAR OF RAISED LOADER LABEL STICKER	1
5	S1130600579	LIFTING POINT LABEL STICKER	1
6	S1130600580	PINCH POINT LABEL STICKER	1
7	S1130600581	WARNING STICKER	1
8	S1130600582	WARNING LABEL STICKER	1
9	S1130602955	SUMMIT STICKER	1
10	S1130602956	LX85	1
11	S1130600585	LOADER MOVEMENTS DIRECTION STICKER	1
12	S1130604285	THIRD FUNCTION( WITH FLOAT) STICKER	1
13	S1130601318	TORQUE WARNING STICKER	1
14	S1130602957	WARNING STICKER CP65	1

item no.- 9



item no.-10



item no.-11



item no.-12



item no.-13



The logo for Summit Tractors features the word "SUMMIT" in a bold, dark teal, sans-serif font. A thin, dark teal arc curves over the top of the letters. Below "SUMMIT" is the word "TRACTORS" in a smaller, bold, dark teal, sans-serif font. Two horizontal lines, one above and one below "TRACTORS", extend from the left and right sides of the word. The entire logo is centered on a light gray background that is part of a larger geometric design with white and dark teal sections and a hexagonal pattern in the corners.

**SUMMIT**<sup>™</sup>  
—TRACTORS—